

## **30 Norwood Avenue, Goonellabah**

### **Table of Contents**

- | [Property Details](#)
- | [Photo Gallery](#)
- | [Map](#)
- | [Contact For Inspection](#)

## Property Details

**30 Norwood Avenue, Goonellabah**



**SOLD BY THE WAL MURRAY TEAM**

3  2  2 

Perfectly positioned within walking distance to Goonellabah Shopping Centre and the local sports fields, this brick and tile home offers comfort, convenience and space for the whole family at an affordable price.

Step inside to find three generous bedrooms, a stylishly renovated bathroom and a modern kitchen with dishwasher. The home features separate lounge and dining areas, with the lounge opening out to a sunny front balcony—ideal for your morning coffee or relaxed outdoor dining.

The fully fenced backyard is perfect for kids and pets, while the double lock-up garage underneath provides ample storage space and room for hobbies or a workshop.

Whether you're a first home buyer, investor or downsizer, this property offers a fantastic opportunity. Currently vacant ready to move straight in.

- 3 Bedrooms
- 2 Bathrooms
- 2 Garages
- Balcony
- Fully Fenced
- Built In Robes
- Dishwasher

---

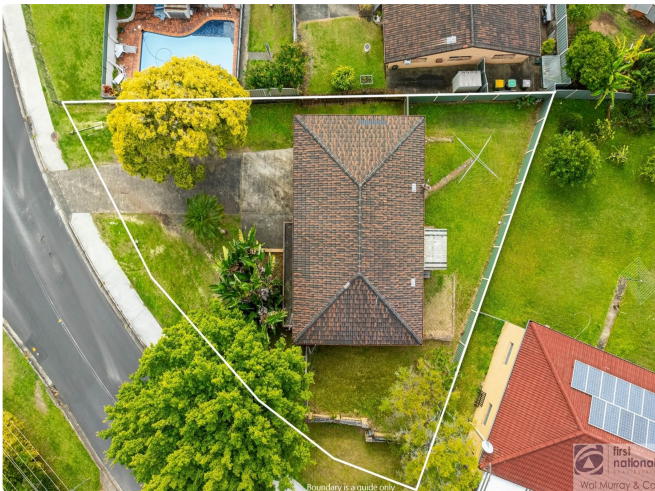
**\$559,000**



## Photo Gallery











LOWER LEVEL

UPPER LEVEL

Dimensions are approximate. All information contained herein gathered from sources we believe to be reliable. However we cannot guarantee its accuracy and interested persons should rely on their own enquiries. © valuemedia vision 2022.

**30 Norwood Avenue, Goonellabah**

INT : 97.8m<sup>2</sup>  
EXT : 12.5m<sup>2</sup>  
GARAGE : 59.3m<sup>2</sup>

first national  
Wal Murray & Co



LOWER LEVEL

UPPER LEVEL

Dimensions are approximate. All information contained herein gathered from sources we believe to be reliable. However we cannot guarantee its accuracy and interested persons should rely on their own enquiries. © valuemedia vision 2022.

**30 Norwood Avenue, Goonellabah**

INT : 97.8m<sup>2</sup>  
EXT : 12.5m<sup>2</sup>  
GARAGE : 59.3m<sup>2</sup>

first national  
Wal Murray & Co

## Map



## Contact For Inspection



### **BENJAMIN CONTE**

LICENSED REAL ESTATE AGENT

0408 368 913

[ben@walmurray.com.au](mailto:ben@walmurray.com.au)



### **KEELY FOSTER**

SALES ASSOCIATE

0455 950 880

[keely@walmurray.com.au](mailto:keely@walmurray.com.au)



